

# Mapping Economic Disadvantage in NSW

NCOSS Member Webinar

with Ben McAlpine (Director, Policy & Advocacy)

29 May 2023

# Welcome!

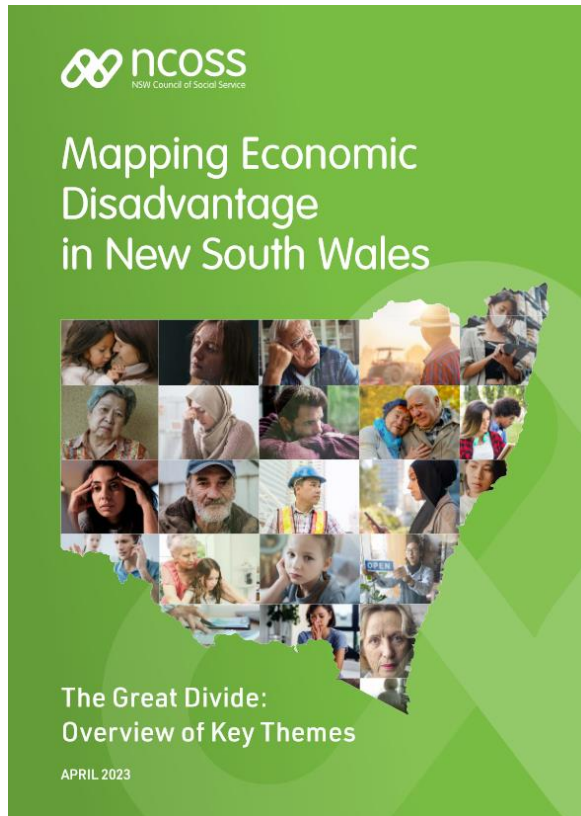
The purpose of the workshop is to:

- Share the key findings of the research, including themes regarding who experiences poverty and where.
- Explain the recommendations highlighted in the report and how this will influence NCOSS advocacy activities.
- Demonstrate how to use the data visualisation tools (Online Maps and Dashboard).

# Session outline

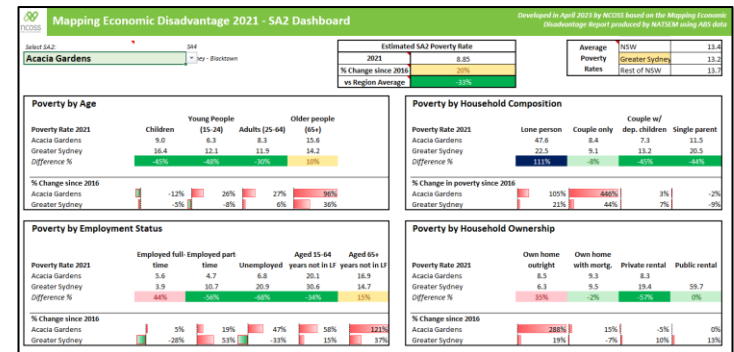
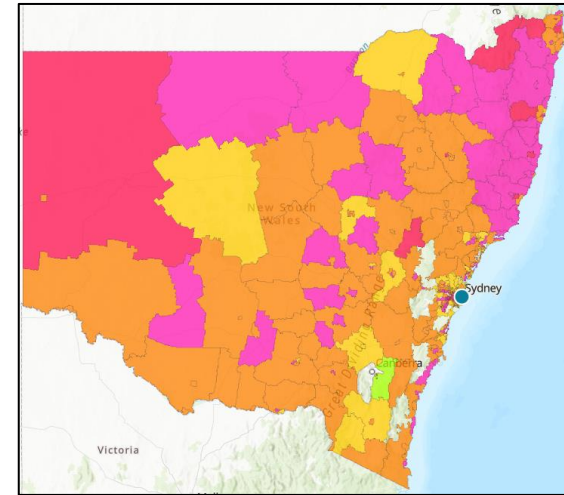
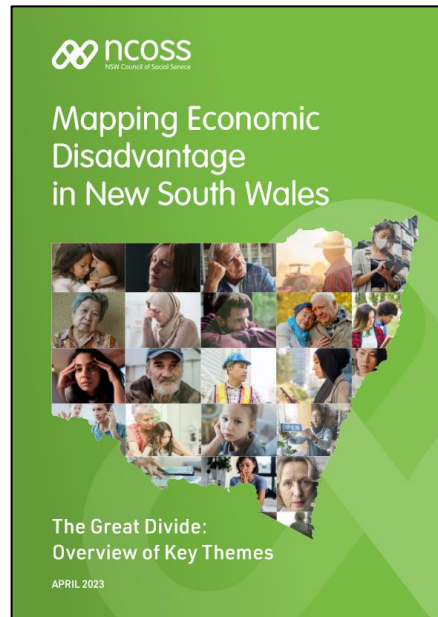
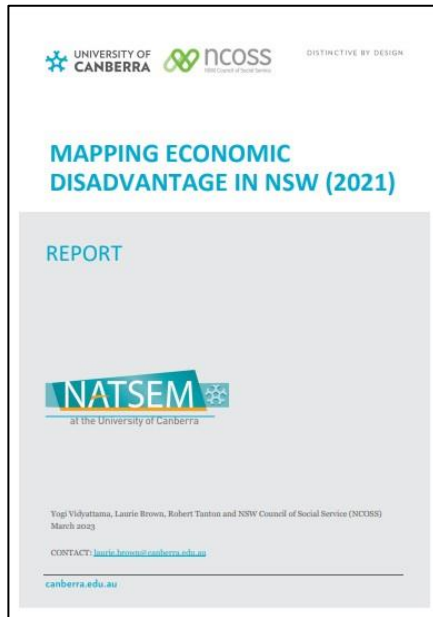
Section	Timing
Welcome and introduction	5 minutes
Overview of the research, findings and recommendations	30 minutes
Walkthrough of the online tools	10 minutes
Questions	30 minutes

# Mapping Economic Disadvantage in NSW



- Second Mapping Economic Disadvantage in NSW report, in collaboration with NATSEM
- Census and ABS data 2021
- Analyses and maps poverty rates for demographics across the state (age, sex, employment, family arrangements, and housing tenure)
- Compares results to 2016

# Two reports and two data tools



# 12 Key Themes

(1/3)

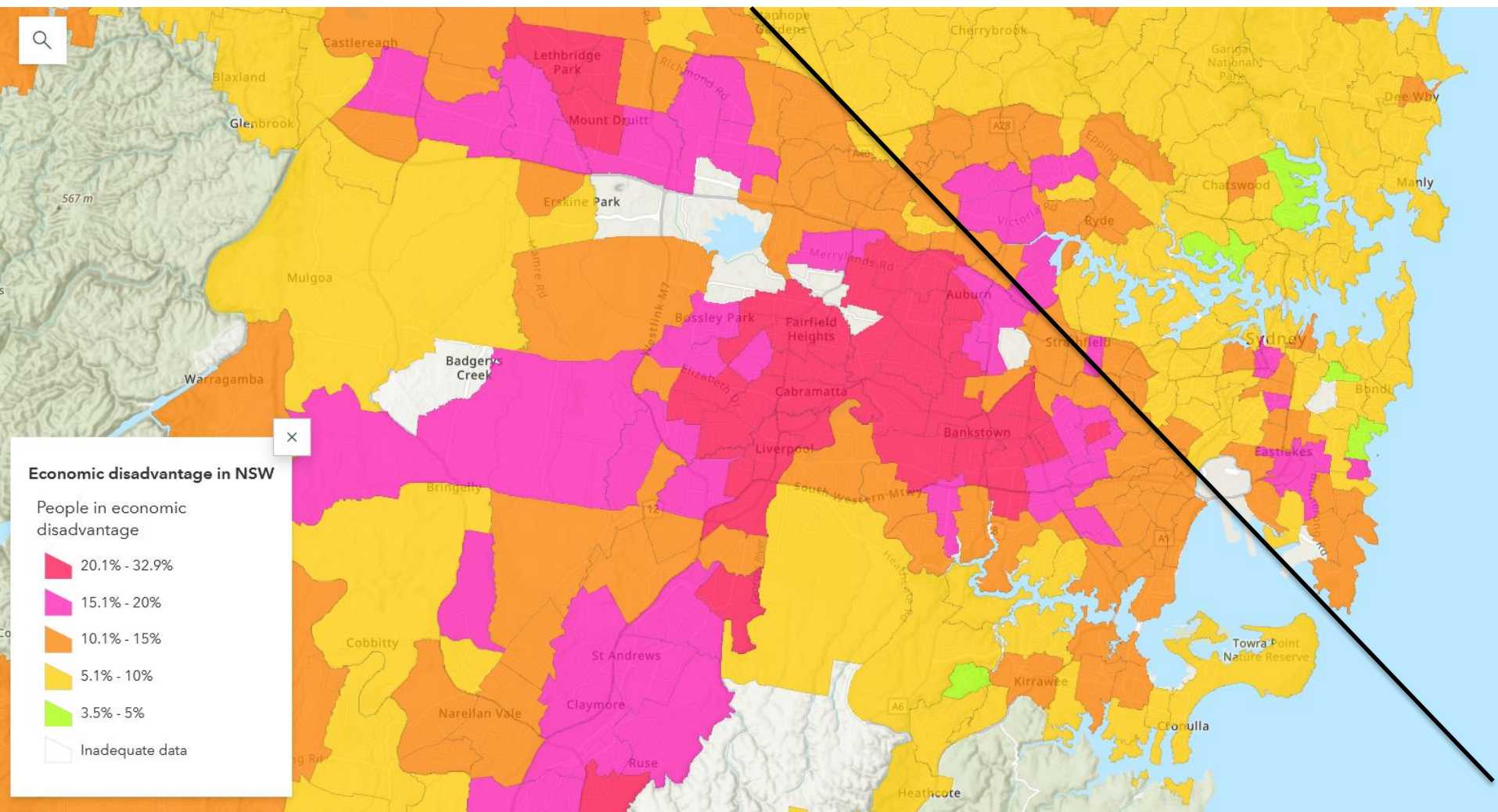


NSW now has one million people living in poverty



Sydney has a significant poverty divide and it's getting worse

# Sydney's Great Poverty Divide



# 12 Key Themes

(1/3)



NSW now has one million people living in poverty



Sydney has a significant poverty divide and it's getting worse



The poverty rate across rural and regional NSW is slightly higher, but the impacts are markedly different

- Young People – 25% higher
- Children – 22% lower
- Unemployed – 86% higher
- Single Parents – 39% higher



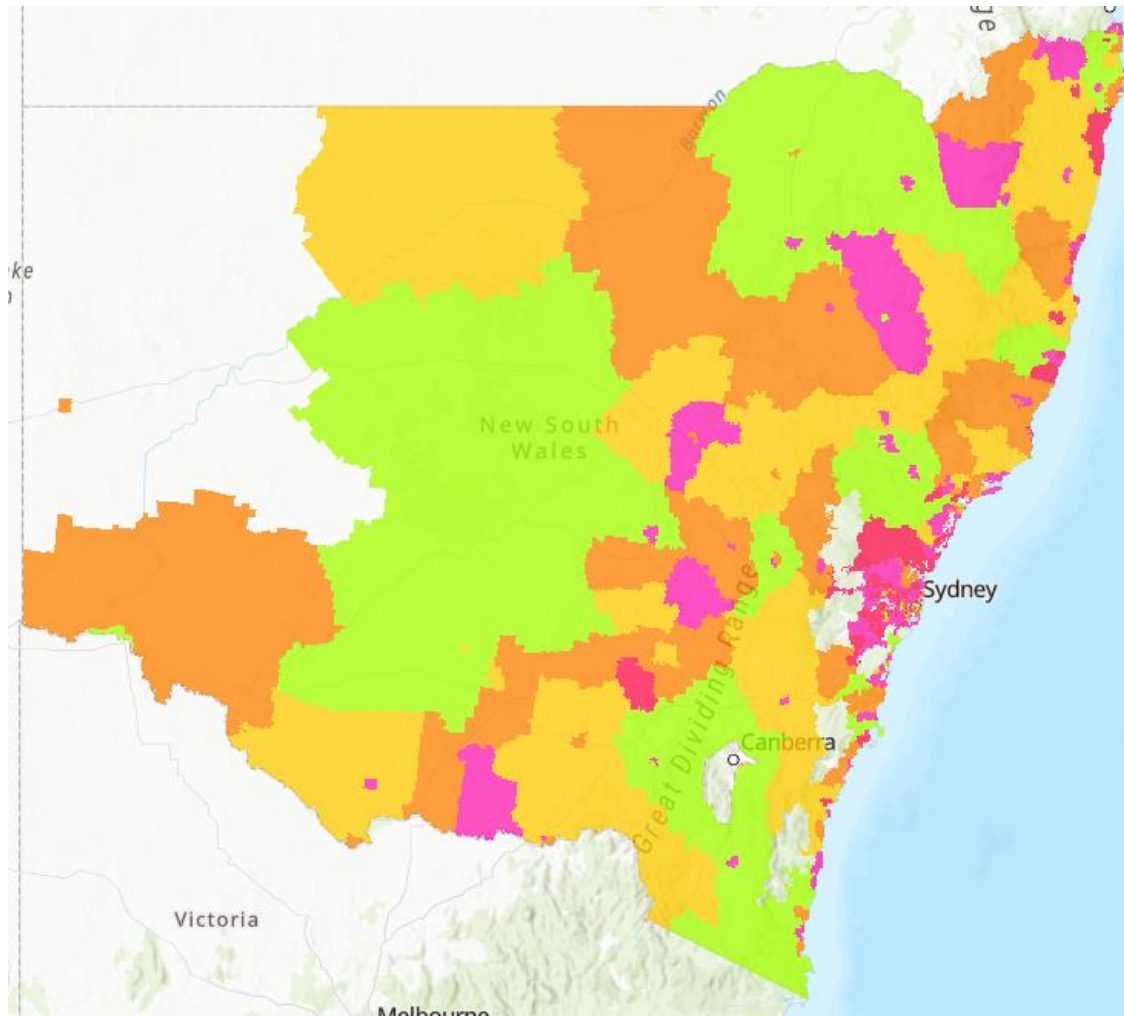
# 12 Key Themes

(2/3)

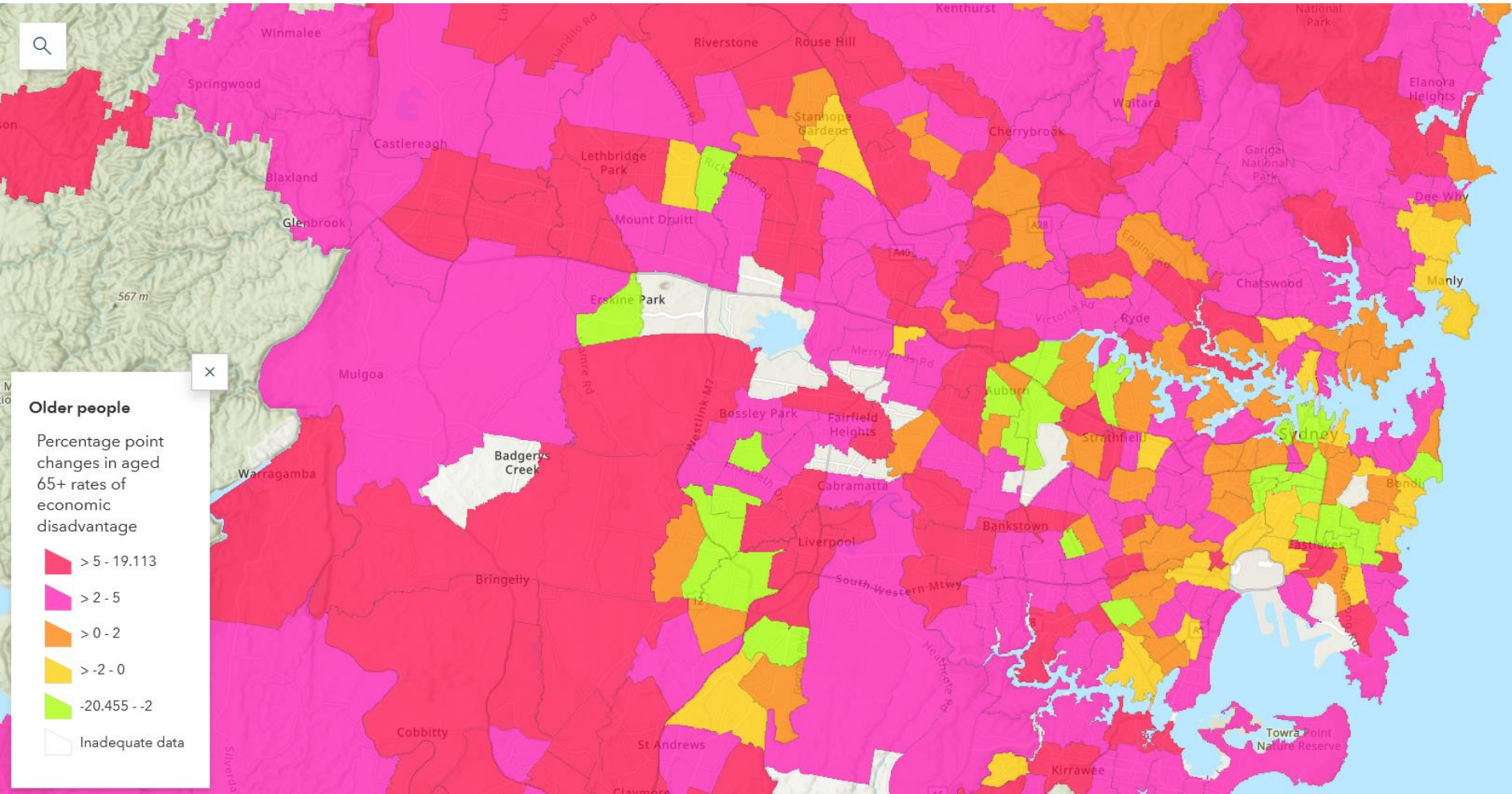


Older people experienced an alarming growth in poverty

# Change in poverty rates for 65+



# Change in poverty rates for 65+



# 12 Key Themes

(2/3)



Older people experienced an alarming growth in poverty



Children still face the highest rates of poverty in NSW of all age groups



Being unemployed or not in the labour force are two of the highest risk indicators of poverty...



..but employment is not a guarantee against poverty

# 12 Key Themes

(3/3)

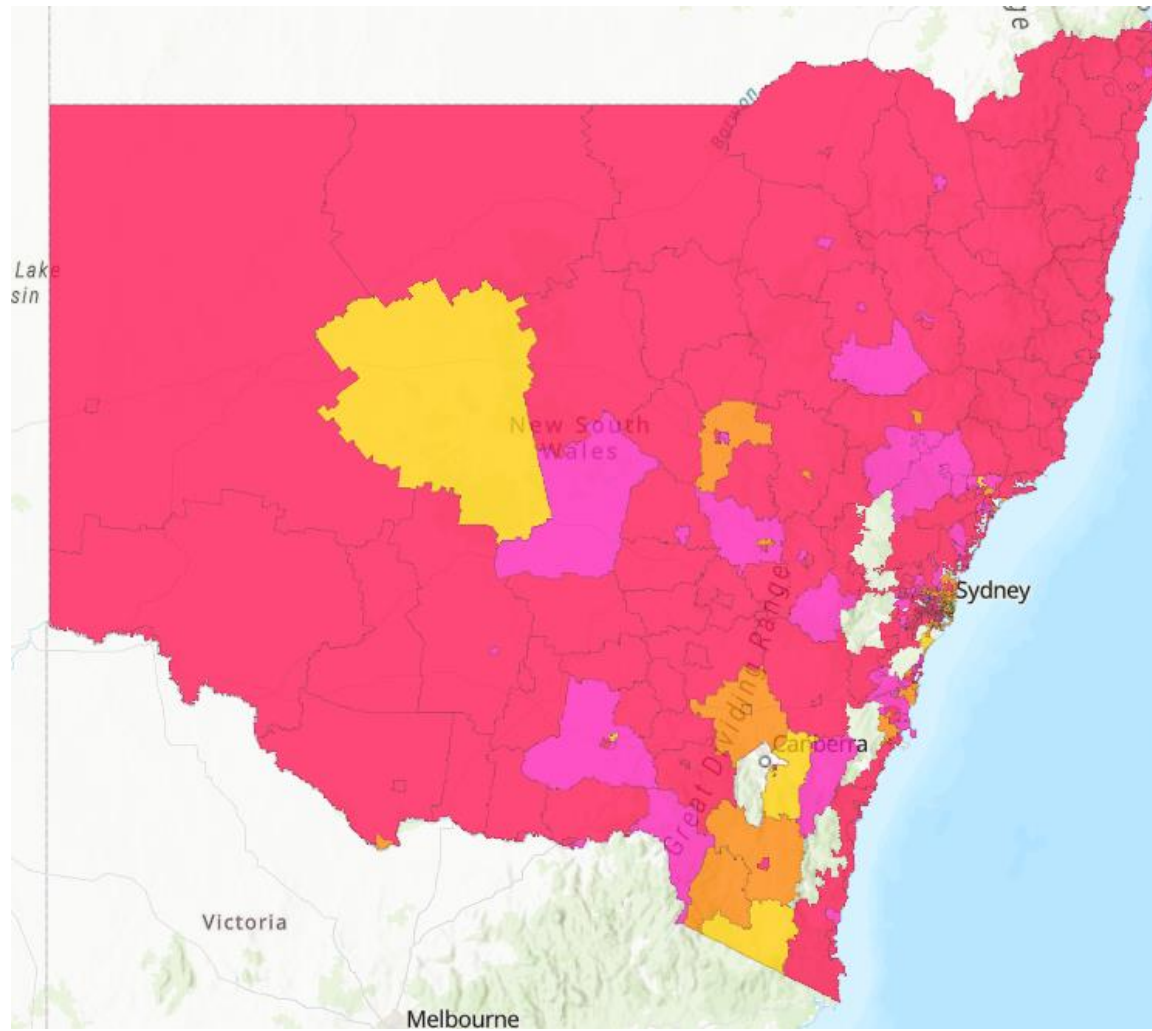


Public housing is no longer the safety net it used to be

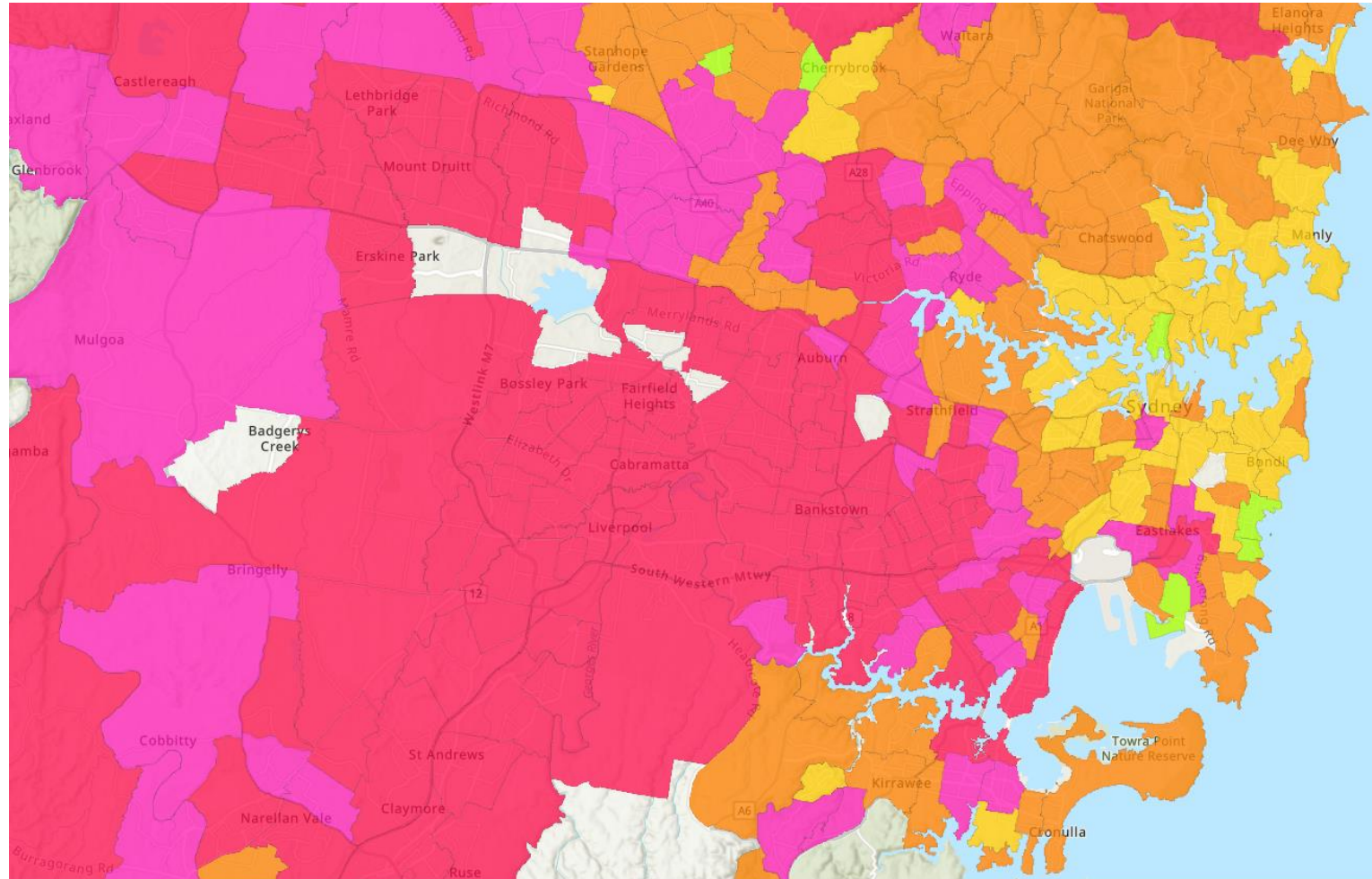


Poverty rates for private renters in Greater Sydney are intensifying

# Poverty Rates for Private Renters – NSW



# Poverty Rates for Private Renters – GSYD



# 12 Key Themes

(3/3)



Public housing is no longer the safety net it used to be



Poverty rates for private renters in Greater Sydney are intensifying



Living by yourself or parenting on your own puts you at significant risk of poverty



Certain communities are at far greater risk of living in a low-income household



Temporary additional income support measures immediately and significantly reduced poverty



# Five Recommendations

- 1** Advocate to lift the rate of income support payments to above the poverty line, and increase CRA by 50%
- 2** Take action on housing affordability
  - a. Social Housing
  - b. Housing first and Together Home
  - c. Renters protection
  - d. Social housing rest setting
- 3** Better target cost-of-living relief products
- 4** Develop population-based planning and funding mechanisms for the provision of essential social services in NSW
- 5** Enhance investment for critical social infrastructure supporting disadvantaged population groups at the local level

# Tool #1: Online Mapping Tool

- Mapping visualisation of SA2 small-scale poverty data across NSW
- Two sets of maps:
  - NSW 2021 estimate by SA2
  - Estimated changes 2016-2021 in NSW by SA2
- Ability to filter by all demographic groups in the research (sex, age, employment, household composition, household tenure, low-income household rates)

Now for a quick tour!

## Tool #2: SA2 Dashboards

- Dashboard visualisation of key data for individual SA2s, presenting four key demographics:
  - Age
  - Household Composition
  - Employment
  - Household Ownership
- For each of these, it presents:
  - Poverty rate for each sub-group (e.g. children)
  - Comparison to the relevant regional average
  - Change since 2016

Now for a quick tour!

# Questions

**Over to you!**

*(and feel free to explore the tools a bit while we do this)*

Thank you for your attendance and participation.

---

**Queries about this event to:**

**[advocacy@ncoss.org.au](mailto:advocacy@ncoss.org.au)**